

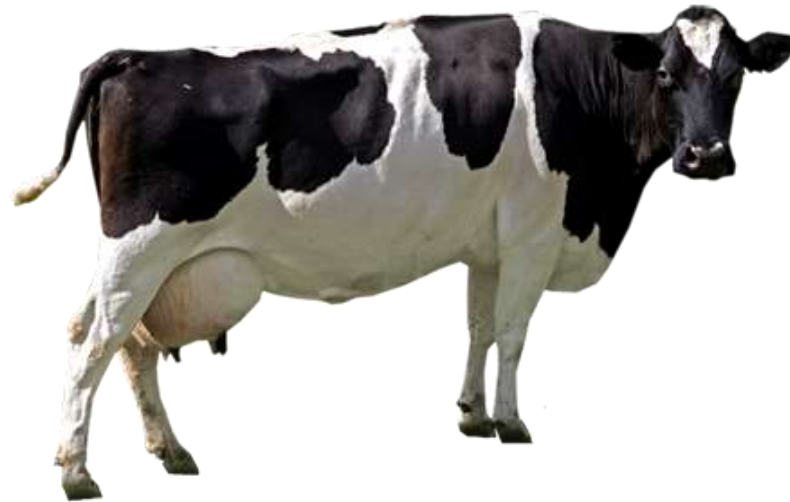


Elnaz Khatami
09 May 2017
www.mastiline.com

Our team



What is the most important to a farmer?



The cow



LUCI improves the health of dairy cows by continuously monitoring levels of SCC in milk, directly in the stall.

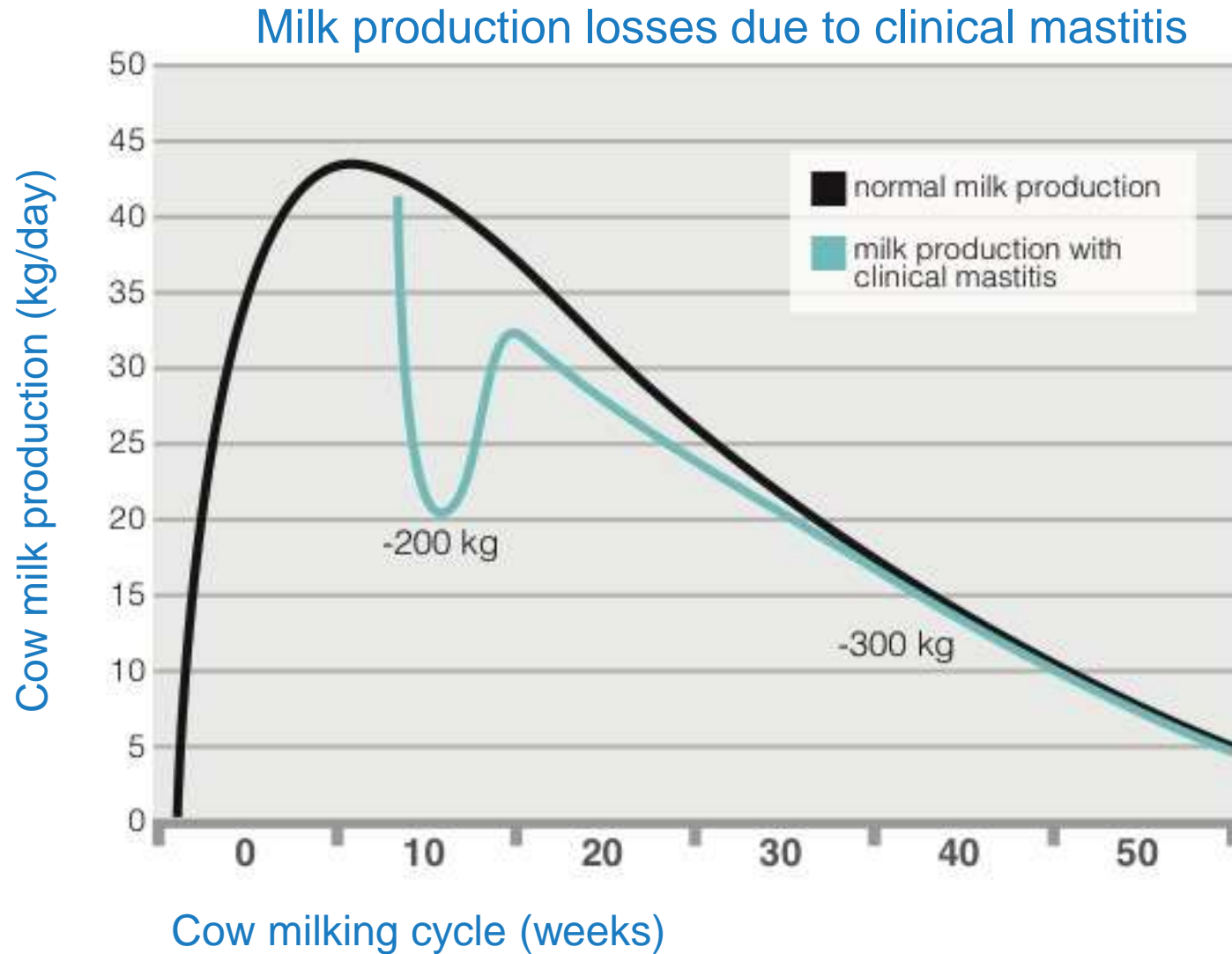
Why is monitoring SCC important?

1. Healthy cows deliver more and better quality milk.
2. Estimation of WUR research indicates a revenue potential of 82 – 220 (€/cow/year)
3. In-line SCC monitoring improves health of entire herd.
4. Improved product quality and food safety

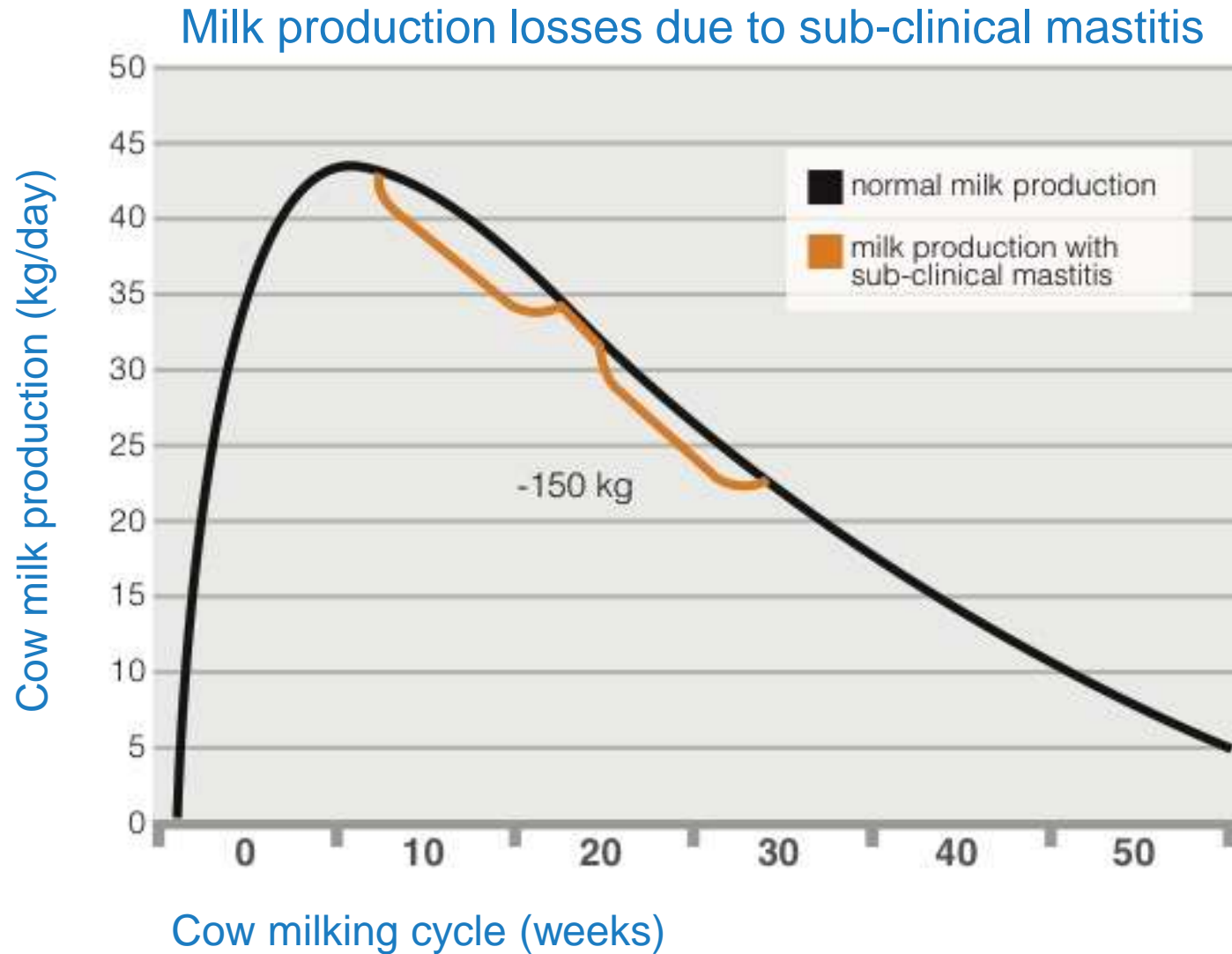


Meet LUCI

How much can be saved with monitoring?



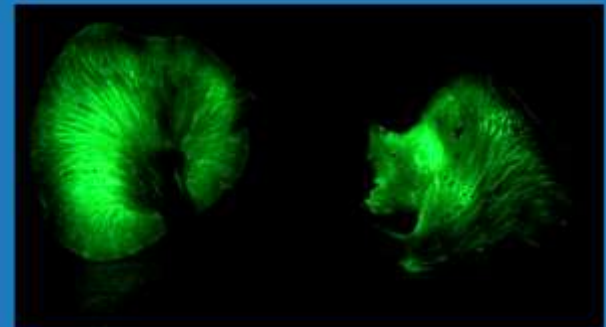
How much can be saved with monitoring?



On-line SCC monitoring



- Uses ATP luminescence as an indicator of the number of somatic cells
- Consists of 2 components
 - In-line sampling and detection system, designed for easy connection to the AMS
 - Cassette containing the reagents for measuring cell counts
- With a detection limit of 50K cells/ml



Improving the health and welfare of dairy cattle.

Improving efficiency in the dairy value chain





Happy cow, happy family.



Thank you for your attention.



Elnaz Khatami, Sales manager

📍 Hermes 8, 8448 CK Heerenveen
☎ +31(0)6 1879 6030
✉ e.khatami@mastiline.com
🌐 www.mastiline.com